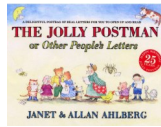


Literacy

Key texts we will read:

The Jolly Postman



Meerkat Mail

Hansel and Gretel (Traditional Tales)

As readers we will:

- Retelling familiar stories using masks
- We will sequence a story using pictures and write what is happening in each.
- Look at a range of texts

As writers we will:

- Write a familiar story with a beginning, middle and an end.
- Retell a familiar story by making a story map.

Science

As scientists we will:

- Children will know that all objects are made from one or more materials that are chosen for their suitability for the task.
- Children will know a window is made from glass because it is transparent and allows you to see through it.
- Children will know a material can be suitable for different purposes and an object can be made from different materials.
- Children will know some materials can be changed by bending, squashing, stretching, twisting, rolling and pressing.



Euler Curriculum Map Summer 1 2024 Key Stage 1

PSHE and Personal Development:

As caring citizens we will:

- To identify the members of my family and understand that there are lots of different types of families
- To identify what being a good friend means to me
- To know appropriate ways of physical contact to greet my friends and know which ways I prefer
- To know who can help me in my school community
- To recognise my qualities as person and a friend
- To understand why I appreciate someone who is special to me .

Maths

As mathematicians we will:

- Count in 2s
- Count in 10s
- Count in 5s
- Recognise equal groups.
- Add equal groups.
- Make arrays.
- Make doubles.
- Make equal groups –sharing
- Make equal groups –grouping
- Recognise half a shape or object.
- Find half a shape or object.
- Recognise half a quantity
- Find half a quantity.
- Recognise a quarter of a shape or object.
- Find a quarter of a shape or object.
- Find a quarter of a quantity.

DT

As designers we will:

- Generate ideas by drawing on t our own experiences
 - Use knowledge of existing products to help come up with ideas
- Work confidently within a range of contexts.
Assemble, join and combine materials.

Music

As musicians we will:

- Play tuned and untuned instruments musically.
- Listen with concentration and understanding to a range of high-quality live and recorded music.
- Experiment with, create, select, and combine sound using the inter-related dimensions of music.

PE:

As active pupils we will:

- Improve and develop our striking and fielding skills.
- Develop team building skills.

Computing:

As digital pupils we will:

- Use Potty Painters - Digital Art and book design
- Discuss what an illustration is.
- Create and edit an illustration.
- Create a ebook.
- Add a illustration to an ebook.

Hessle Foreshore and Country Park

Summer 1 2024
National
Curriculum
Lead subject: Geography

New knowledge we will acquire:

- To know some features they saw on the fieldwork trip e.g. river, bridge, park, wood
- To know the names and link to pictures of river, bridge, wood, mill, vegetation
- You can describe where something is using the words next to, between, in front of, behind
- The compass directions are north, south, east and west
- A 2D map has drawings of an area with a key to represent the drawings.
- A 3D map contains physical and human features of an area.

Learning activities we will complete:

- Trip to Hessle Foreshore.
- Take photos of physical features that we can see at Hessle Foreshore.
- Label pictures of Hessle Foreshore and Country Park.
- Create our own 3D map of Hessle Foreshore and Country Park using various materials.
- Create our own 2D map of Hessle Foreshore and Country Park.
- Describing the position of different features using our key vocabulary.
- Following directions using a compass.

Key vocabulary will use:

Wood, forest, park, country park, river, vegetation, hill, bridge, car park, mill, quarry, foreshore, path, pond, map, perspective, plan, route, aerial photograph, North, East, South, West, near, far, close, beside, in between, front, next to and behind.

Visits/visitors:

Trip to Hessle Foreshore and Country Park.

Helpful websites:

[What are human and physical features in geography? - BBC Bitesize](#)